

## King Mesa Gin's Solution to Water Intrusion

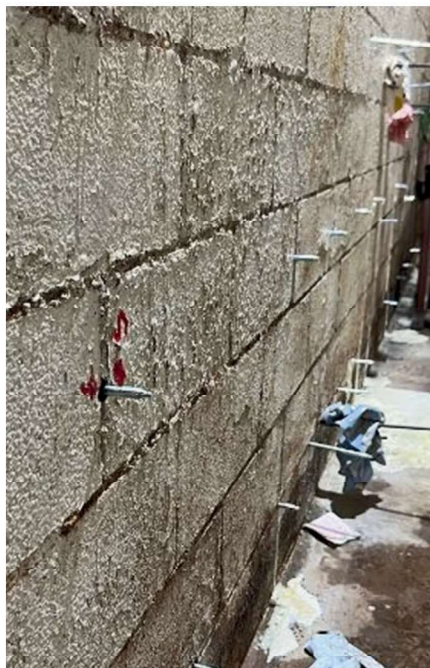
Lamesa, Tx



### Problem

King Mesa Gin in Lamesa, Texas, faced significant water intrusion in the basement's "press pit," threatening the safety of its personnel and the integrity of its equipment and products.

As a major producer of certified U.S. organic cotton, resolving this issue was crucial before the upcoming harvest.



### Solution

King Mesa Gin enlisted WTX Foundation Repair from Amarillo, Texas, and Earth Contact Products from Olathe, Kansas, to tackle the problem. After evaluating the damage caused by fluctuating water levels over the years, the teams chose the NCFI-120 Single Component polyurethane (formerly Terra-Lok™ 120) for the job. This solution involved injecting over 400 gallons of NCFI-120 to form a monolithic waterproof barrier along the walls of the press pit. Although initial plans included sealing the floor, unforeseen complexities with the double-slab concrete structure shifted the focus only to the walls in the project's first phase. The discovery of further seepage led to a second phase where the team sealed gaps between the floor slabs to fully prevent water infiltration.



### Results

The intervention by WTX Foundation Repair and Earth Contact Products sealed the press pit effectively, ensuring that the facility was prepared for the fall harvest.

The project's success was evident when the pit remained dry after significant rainfall, a first for the facility.

This resolution not only safeguarded the upcoming production cycle but also bolstered King Mesa Gin's reputation as a leader in the organic cotton market.



Scan this code to  
read the full case  
study

### NCFI Geotechnical Division

Div. of Barnhardt Manufacturing Co. \* P.O. Box 1528 \* Mount Airy, NC 27030 \* 800-346-8229

WWW.NCFIGE.O.COM